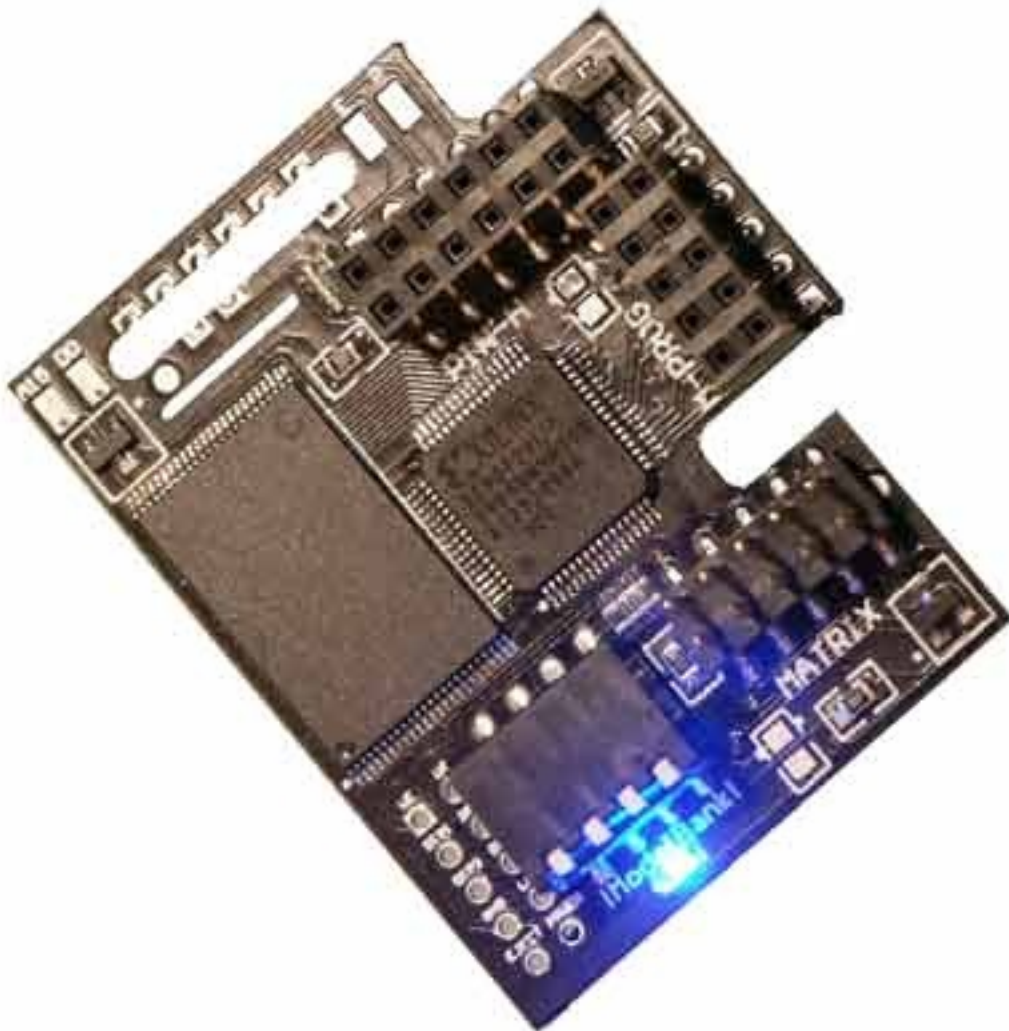


Chameleon Matrix Add on Install:

Step By Step

Dear valued customer, we, the Xodus-Team developers of the Chameleon, would like to thank you for purchasing our latest innovation for your console. We believe that we have the most advanced and yet simple to use development system. This Manual will describe briefly the steps needed to install your Chameleon using it as a Matrix add on.



PLEASE NOTE: The Matrix chip was never designed to be upgraded, the idea to offer to our valued customers a way to upgrade their Matrix chip from 256k to 1 Meg was brought about through threats by certain members of the scene to forcefully use larger bios in order to promote their hardware. We struggled to try and find a way to upgrade the Matrix without any difficult or damaging modifications, however the only possible way to take control of the Matrix is to literally kill all power to the SST chip. This involves having to cut three tracks on the Matrix PCB. Although it is possible to re-solder these tracks, we strongly recommend installing the Chameleon through one of the other methods of install, or wait a while for our soon to be released revolutionary solder less adaptor.

Please refer to the Console disassembly guide (found on our website)

Step 1: Killing the SST power supply :-)

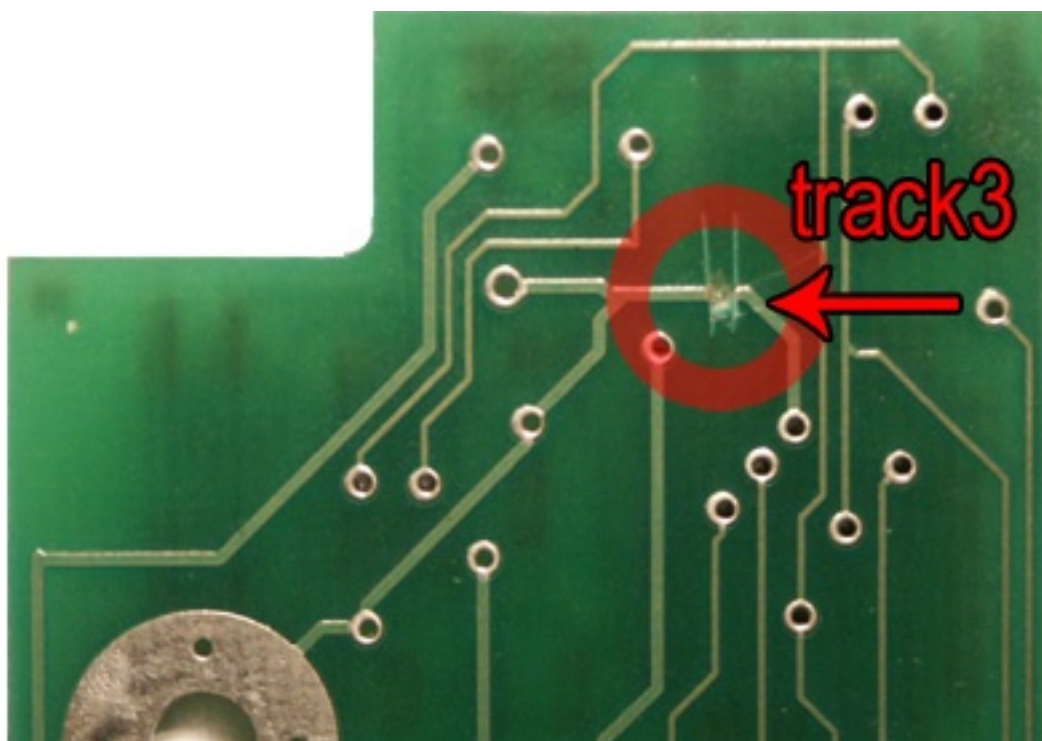
Cut the two tracks on the top side of your Matrix use a sharp knife or blade, ensure the tracks are cut properly, as seen in fig 1a.

fig 1a



Cut the bottom track as seen in fig 1b.

fig 1b



Step 2: Install the Matrix as described by the Matrix installation manual. The modes and user functions of the Matrix remain the same except for Mode 4.

Step 3: Place Chameleon on to programmer port of Matrix as seen in fig 3a.

fig 3a



Note: In order to operate the Chameleon in mode 4 points E & P need to be soldered please refer to either of the two other manuals for the location of these points

Please refer to the User Manual for instructions on how to operate your Chameleon.

Wishing you many hours of fun and adventure,

Yours,

Xodus-Team